



+ CarePod™ Narrow Wall-Mounted Workstations

Putting Care Where It Counts™

Store essential supplies and electronic health record (EHR) equipment at the point of care with our space-saving wall-mounted workstations.

Combining secure storage with a fold-down work surface, the CarePod™ Wall-Mounted Workstation can be installed virtually anywhere—hallways, patient rooms, and more—so caregivers can work more efficiently, comfortably, and effectively.



CarePod™ Narrow

Shown in River Rock
with Driftwood laminate
and a keypad lock



Narrow Wall-Mounted Workstations



With a slim, space-saving profile, CarePod™ Wall-Mounted Workstations are crafted from durable powder-coated steel to withstand heavy everyday use, cleaning, and disinfecting. Choose from two depths, three paint colors, three optional laminate finishes, and three secure lock styles. Customize with additional accessories, sold separately.

Features:

- Two shelves, two vertical rails, and one retaining bar
- Rear cutout for access to a 2-gang power outlet
- Two power cord pass-throughs on top right and bottom left (remove caps to use)
- Interior pre-drilled holes for mounting optional lock boxes
- Door auto-closes when weight is removed from work surface
- 6" depth model: Air vents, compatible with Programmable Cooling Fan, sold separately

// CarePod™ Narrow
Shown in River Rock with Driftwood laminate in 4" and 6" depth with a keypad and an RFID lock.

Exterior Size	W20" × H25"	Laptop Size	17" max
Available Depths	4" 6"	Monitor Size	17" max
Weight	4" 24 lbs 6" 31 lbs	Material	Cold rolled steel
Interior Size	W17.5" × H19.5"	Shipping Dimensions	4" W36" × L25" × H9" 6" W36" × L25" × H11"
Storage Capacity	4" 1113.7 in ³ 6" 1665.7 in ³	Shipping Weight	4" 34 lbs 6" 39 lbs
Door Work Surface	W17.3" × H19"	CarePod Warranty	3-year limited
Door Closing Action	Auto-close	Cylinder Warranty	1-year limited
Door Weight Capacity	30 lbs	Electronic Lock Warranty	2-year limited



Secure Medical Supply Storage

Store what you need, where you need it. Having essential medical supplies, medications, and PPE at the point of care can **reduce medical administration time by nearly 50%*** and **save nurses almost an hour per shift.†**

The CarePod™ offers flexible shelving configurations, an array of accessories, and three secure lock options to accommodate any medical facility's needs.



[Click to see the CarePod storage capabilities](#)

// CarePod™ Narrow 4"
Shown in Sandstone with Walnut laminate and an RFID lock. Shelves and retaining bar included. Accessories sold separately.

Colors & Finishes

With 12 color and finish combinations, the CarePod complements any aesthetic or décor.

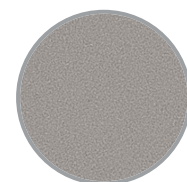
[Click to explore different style combinations](#)



Paint Colors

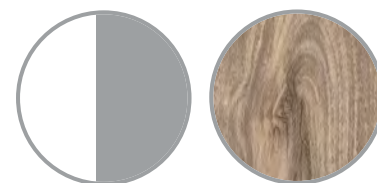


Powder White Sandstone

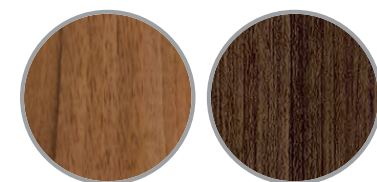


River Rock

Laminate Finishes*



None Driftwood



Walnut Umber Riftwood

*Laminate finishes only available for left and right sides of the CarePod.

Slim EHR Storage

Save space and work in comfort with compact IT storage for a tablet or laptop. Power cord pass-throughs and a rear access cutout, plus optional accessories, easily keep devices in place.

Coupling storage with a spacious, fold-away work surface, the CarePod takes up **78% less floor space than a traditional desk.‡**

[Click to see the CarePod EHR storage capabilities](#)



// CarePod™ Narrow 6"
Shown in White with Umber Riftwood laminate and a Key lock. Shelf included. Accessories sold separately.



*The Center for Health Design, Decentralized Medication Distribution, 2015.

†Atrium Health Union (FKA Carolinas HealthCare Systems-Union), Decreasing Nursing Waste in the Medication Administration Process, 2018.

‡When compared to a traditional work surface of similar size.

Lock Styles

With the safe storage of medical supplies, medication, and EHRs a must, the CarePod™ Narrow Wall-Mounted Workstation offers three secure locking options to meet your facility's requirements.



Click to learn more about the CarePod lock options

Key Lock



Touch RFID



Keypad

Accessories

Customize your CarePod to accommodate specific usage scenarios with a variety of storage, security, and EHR/IT accessories, all sold separately.

Magnetic Tablet/Laptop Dock



Clear Storage Bins



Magnetic Storage Caddy



Wireless LED Light Bar



Shop the full range of CarePod accessories at [carstens.com](https://www.carstens.com)

For more information:
800.782.1524 / carepodsales@carstens.com
©Carstens, Inc. 03.2021
Literature made in the U.S.A.
Content subject to change.

carstens

**MADE IN
AMERICA**
OF U.S. AND IMPORTED PARTS

certified
WBENC
WOMEN'S BUSINESS ENTERPRISE